



Uniterm
Nigeria
Limited

Indigenous Oil & Gas Services
Company



Contact; info@unitermintl.com;
www.unitermintl.com



Engineering & Construction



Water Treatment



Renewable Energy



Food & Agriculture



Technical Advisory



Oil and Gas





Uniterm
Nigeria
Limited

SMART LOCATION PREPARATION

Austin Idemudia
Snr Operations Engineer

14-02-2023

Table of Content

1. Location Preparation

2. Conventional Methods & Associated Challenges

3. Smart Method & Technology Description

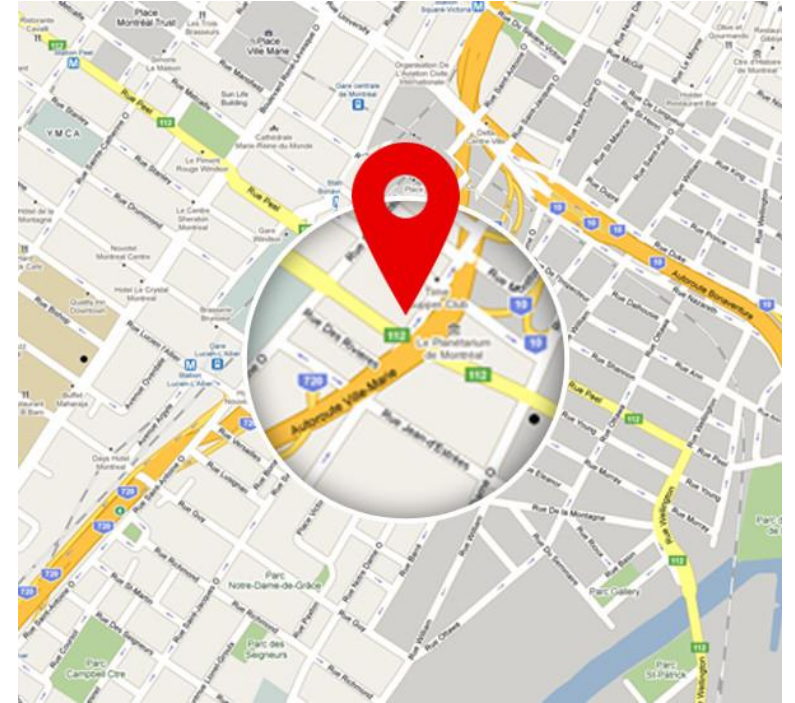
4. Smart Solutions

5. Clarifications/Discussions

Location Preparation

A location is an area where activities are carried out. Locations are the fundamental requirements for all operations.

Most onshore oil and gas operations take place in remote and tough terrains, hence the quality and durability of location preparation and access road are the foundations for the safe and successful completion of a project and re-entry if possible.



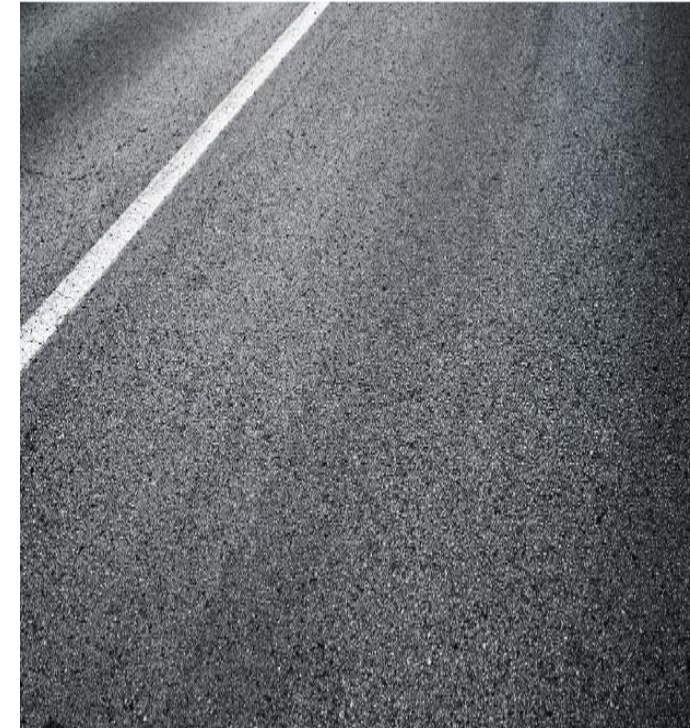
Location Description;

1. Rig site; support for heavy equipment, logistics of equipment and personnel
2. Access road in remote and tough terrains; Logistics of heavy equipment and personnel
3. Stacking yards; Stacking of OCTGs, equipment, etc.
4. Camp sites; Accommodation set up for personnel and operational equipment and units
5. Stadium events
6. Helicopter landing pad
7. Temporary access road, worksite, etc.

Conventional Methods and Associated Challenges

- Asphalt

1. Produces harmful/carcinogenic aerosol especially when expose to the heat of the sun
2. It is sensitive to weather as location preparation cannot be carried out during raining season
3. It takes time for it to cure and attain the required hardness, this time can also be elongated as a result of weather.
4. Destroys vegetation.
5. Cannot be used when temporary access road or worksite is required.
6. The lifespan is 4-5 years, though it could fail before 4 years
7. It is relatively expensive as it requires a lot of surface preparations before it can be effectively deployed.
8. Cannot be deployed on a wet surface



Conventional Methods and Associated Challenges

- Concrete

1. Construction errors as a result of the complexity involve in the preparation. Disintegration, scaling, cracking, etc.
2. Erosion due to *abrasion* results in a worn concrete surface.
3. Spalling, and pop outs typically caused by sudden impact of something dropped on the concrete or stress in the concrete that exceeded the design
4. Heavy material, with a lifespan of about 3-4 years
5. Poor traction which impedes safe logistics of equipment and personnel
6. Destroys vegetation and cannot be used for temporary access road or worksite
7. The cement industry is responsible for about 8% of global carbon dioxide emissions, more than double those from flying or shipping.
8. Require intense surface preparation in wet and muddy conditions



Conventional Methods and Associated Challenges

- Wood

1. Absorb water, contaminants, splinters and rot
2. Low load bearing capacity
3. Poor traction, which impedes safe logistics of equipment
4. Low lifespan of about 3 years and could easily be a breeding platform for weed or grass
5. Poor load distribution
6. Requires intense surface preparation in wet and muddy conditions
7. Not reliable as per the required stability needed for a safe and quality work platform or access road



Conventional Methods and Associated Challenges

Dura-mat

1. Severe Curling Causing Trips, Slips and Falls
2. Overhang Interlocking Lip Breakage, Splits and Cracks
3. Corner Breakage
4. Slippery Surface / Traction Issues On Slope
5. Locking Slots Wear
6. Static Buildup (critical on O&G site)
7. Unmelt Plastic Creating Voids - Contributes to breakage
8. Perimeter Weld Integrity is Poor
9. Irregular size configuration – Length is not Twice the Width



Smart Method & Technology Description

TRACTION

Enhanced traction design offers superior traction for vehicles

PROPRIETY SEALED DESIGN

Adds strength and prevents fluid saturation

INTERIOR

Ribbed interior construction reduces weight while adding strength

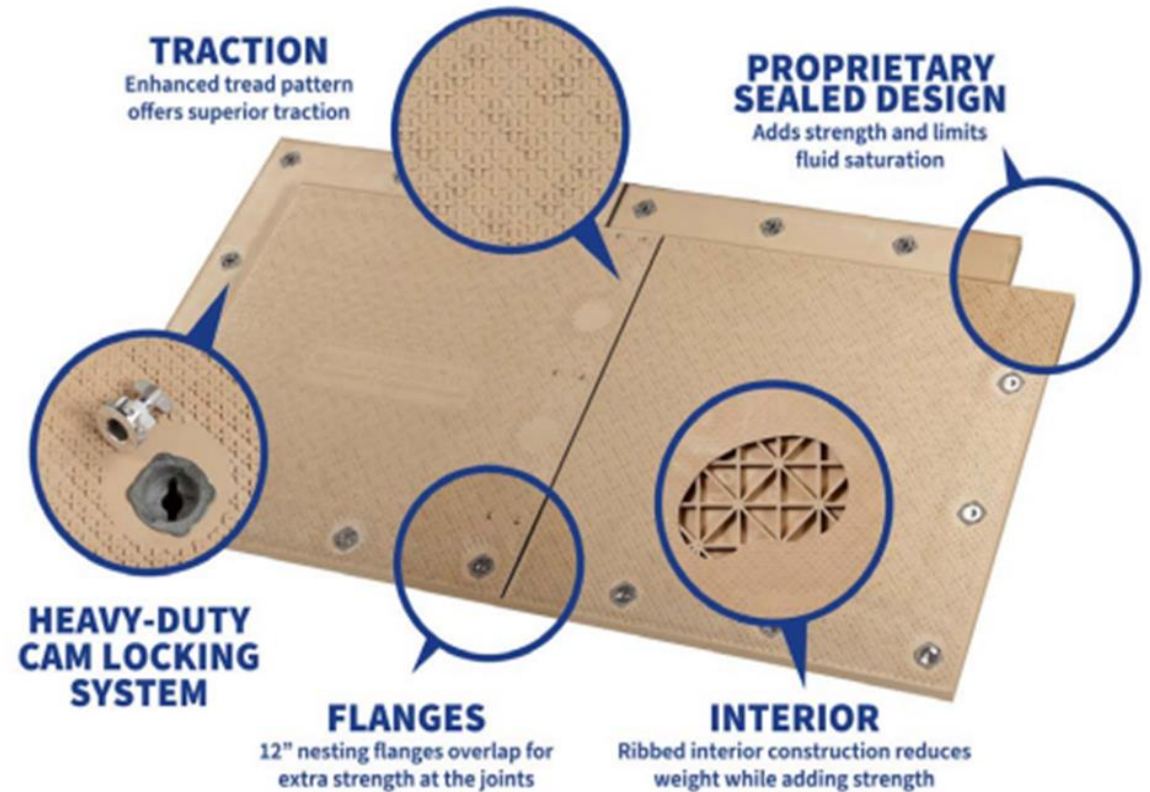
FLANGES

12" nesting flanges overlap for extra strength at the joints

HEAVY-DUTY LOCKING PIN SYSTEM

MEGADECK® HD+ COMPOSITE MATS

Features of MegaDeck® HD



Smart Method & Technology Description

Its overlapping flanges, interlocking design, and secure connection system creates one continuous surface that prevents drifting, separation and hopping under heavy rolling loads or over soft ground.



MegaDeck HD heavy-duty mats are designed specifically for high-traffic work sites, such as power transmission, oil rigs, and construction sites. It creates strong, stable, non-shifting work platform or temporary access roads that reduce the risk of accidents and protect your personnel and equipment.



Smart Method & Technology Description

MATERIAL; High-Density Polyethylene (HDPE) with special impact modifiers that incorporate UV resistance and anti-static properties

Flammability Resistance; UL94HB

Load Capacity: 4,500 tons/ 600 psi

Weight: 1,095 lbs. ea. (496.7 kg ea.)

Connection System; Proprietary, self-aligning, aluminum cam S2 Lock™ system that connects the overlapping flange from adjacent mats with a simple twist of a standard T-bar



Size:

Actual ;7.5' L x 14' W x 4" H (105 ft²) 2.3 m x 4.3 m x 10.16 cm (9.75 m²)

Usable (due to flange); 6.5' L x 13' W x 4" H (84.5 ft²) 1.98 m x 3.96 m x 10.16 cm (7.85 m²)

Smart Solutions Provided by Mega Deck HD Rig Mats

- Saves more than 30% in location preparation time and over 40% in cost especially in well abandonment projects.
- The mats are portable and can be reused for at least 10 years
- Provides safest, most reliable, stable, durable and efficient work platforms and access road
- Protects the environment and also has effective spillage containment capabilities
- Installation and readiness for use is not affected by weather
- Can be used in flooded, muddy and challenging terrains



Reduction of operating cost and time while maintaining **the best of safety standards** will always be paramount in oil and gas business.

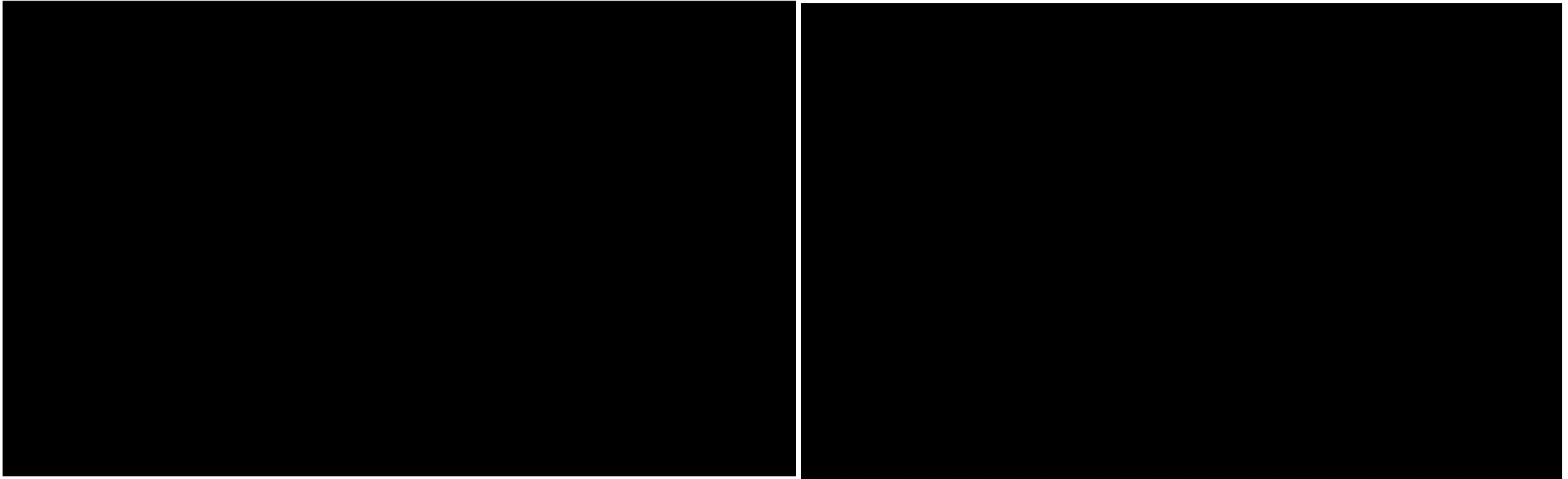
The Mega Deck HD mat is specifically designed for this purpose, making its deployment the smartest way to carryout location preparation for onshore activities.



Thank You



Clarifications/Discussions



For further enquiries, please send contact us at;

- info@unitermintl.com
- austin.idemudia@unitermintl.com

7C Elf Road off mother Cat
Trans Amadi Industrial Layout
Port Harcourt, Rivers State

14/15 Bishop Kale Close,
Off Kasumu Ekemode Street,
Victoria Island, Lagos State.